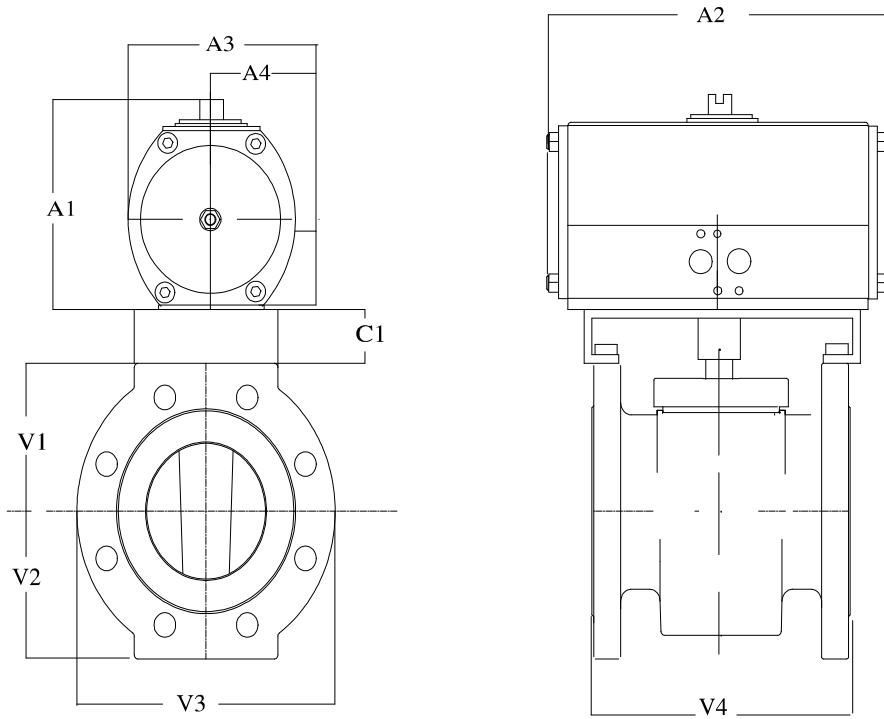


Customer

Project Name

Engineer



Product Code: 2R302/F/TSR55-WCB/316-P

Valve Type: 2 inch Fluoroseal Sleeved Plug Valve Ansi Class 300
Body: Flanged
Trims: 316
Seat/Liner: Teflon

Working Pressure: 720 psi

Actuator Type: TSR 055 F12 0 3 Fail Close / Fail Open
Actuator Mat.: Aluminium Hard Anodised

Manual Override: NOT REQUESTED

Air Supply: 60 psi

Solenoid Valve: NOT REQUESTED

Switch Box: NOT REQUESTED

Positioner: NOT REQUESTED

Acc Bracket: By Fluoroseal

Dim:	A1	A2	A3	A4	V1	V2	V3	V4	C1
Ins:	9.35	12.28	7.52	3.76	3.25	3.25	6.50	8.55	1.38

Overall Height to c/l of valve:- 13.98 ins

Num bolt holes :- 8 Bolt dia:- 0.75 Bolt circle dia:- 5.00