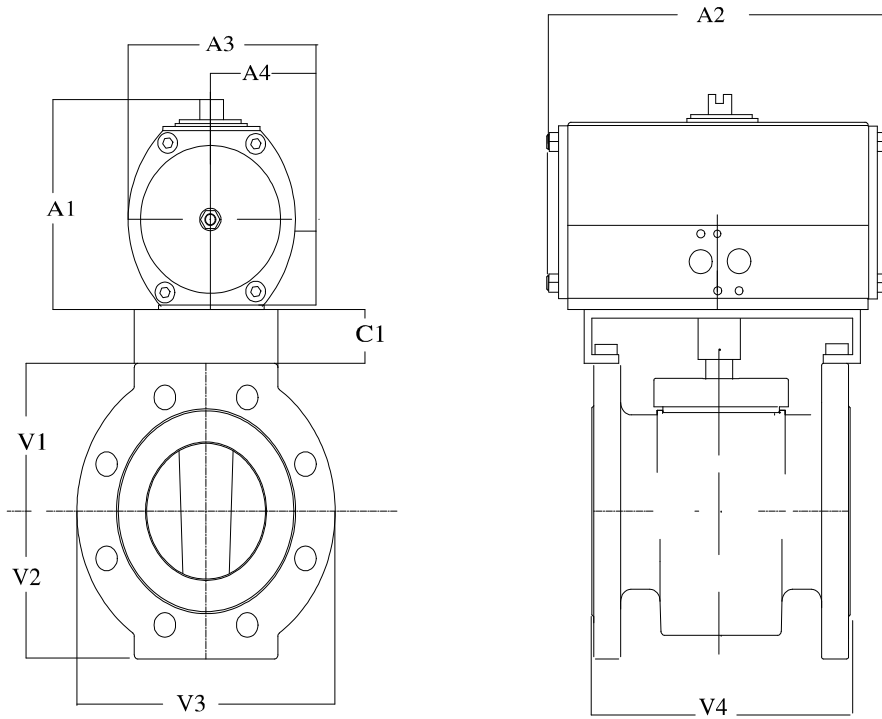


Customer

Project Name

Engineer



Product Code: 3R302/F/TSR70-WCB/316-P

Valve Type: 3 inch Fluoroseal Sleeved Plug Valve Ansi Class 300  
Body: Flanged  
Trims: 316  
Seat/Liner: Teflon

Working Pressure: 720 psi

Actuator Type: TSR 070 F12 0 3 Fail Close / Fail Open  
Actuator Mat.: Aluminium Hard Anodised

Manual Override: NOT REQUESTED

Air Supply: 60 psi

Solenoid Valve: NOT REQUESTED

Switch Box: NOT REQUESTED

Positioner: NOT REQUESTED

Acc Bracket: By Fluoroseal

Dim:	A1	A2	A3	A4	V1	V2	V3	V4	C1
Ins:	9.35	13.39	7.52	3.76	4.13	4.13	8.25	11.17	1.50

Overall Height to c/l of valve:- 14.98 ins

Num bolt holes :- 8 Bolt dia:- 0.87 Bolt circle dia:- 6.63