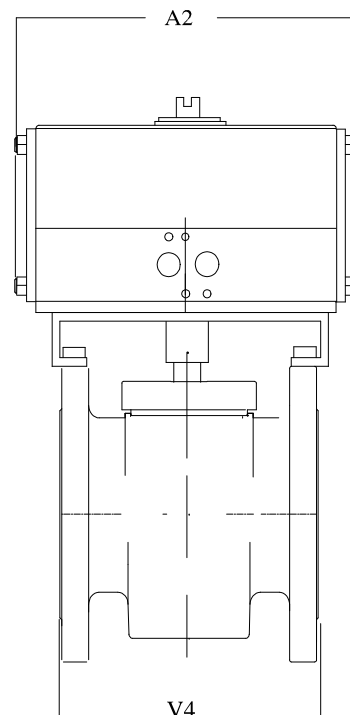
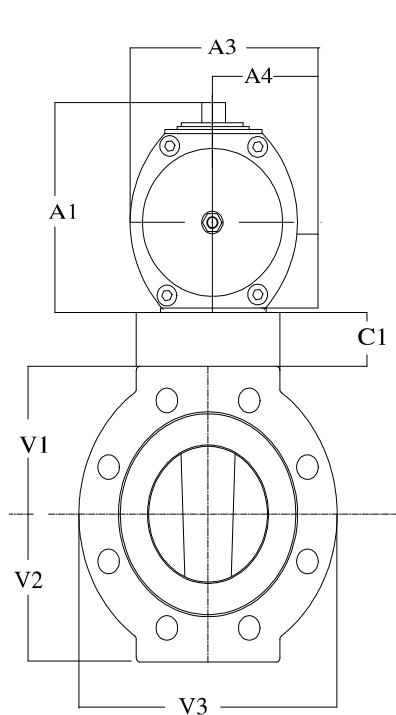


Customer

Project Name

Engineer



Product Code: 4R302/F/TSR150-WCB/316-P

Valve Type: 4 inch Fluoroseal Sleeved Plug Valve Ansi Class 300

Body: Flanged

Trims: 316

Seat/Liner: Teflon

Working Pressure: 720 psi

Actuator Type: TSR 150 F14 0 4 Fail Close / Fail Open

Actuator Mat.: Aluminium Hard Anodised

Manual Override: NOT REQUESTED

Air Supply: 60 psi

Solenoid Valve: NOT REQUESTED

Switch Box: NOT REQUESTED

Positioner: NOT REQUESTED

Acc Bracket: By Fluoroseal

Dim:	A1	A2	A3	A4	V1	V2	V3	V4	C1
Ins:	13.00	15.35	11.02	5.51	5.00	5.00	10.00	12.05	1.63

Overall Height to c/l of valve:- 19.63 ins

Num bolt holes :- 8 Bolt dia:- 0.87 Bolt circle dia:- 7.87



# Fluoroseal

Issued By: Fluoroseal

File Ref: Automated packages

ALL RIGHTS RESERVED

Date: 8/5/2008