



## FLOATING BALL VALVES

**UNIBODY & 2 PIECE  
CAST BODY**

Class 150, 300 & 600



FluoroSeal® Class 150, 2-piece Floating Ball Valve with Enclosed Gear Operator



FluoroSeal® Class 150, Unibody Floating Ball Valve with Wrench Operator

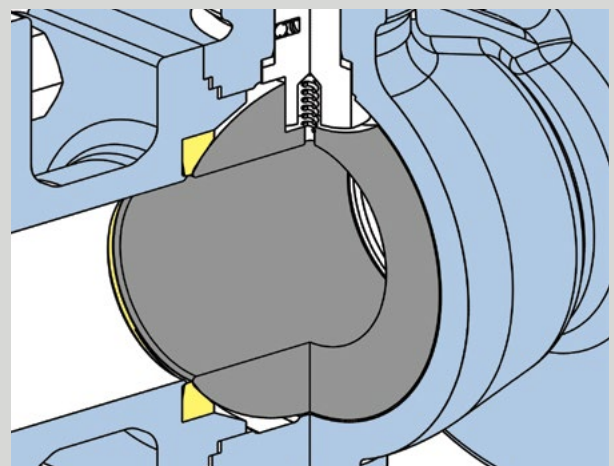
For over 30 years, FluoroSeal Specialty Valves has been manufacturing and customizing a wide range of valves and accessories for many industries including Oil & Gas, Petrochemical, Chemical, Mining, Pulp and Paper, Power Generation, Pharmaceutical, and Marine. FluoroSeal's one and two piece floating ball valves are designed and tested according to API, ANSI, and ASME standards to meet the most stringent industry requirements. These valves provide reliable and long lasting service life in a broad range of difficult and demanding applications.

FluoroSeal one and two piece cast floating ball valves are available in both standard and full port designs. Because of FluoroSeal's metallurgical expertise and in-house foundry capabilities, exotic alloys valves can be supplied with greatly reduced lead times compared to the competition.

### DESIGN FEATURES

- **IN-LINE SEALING**

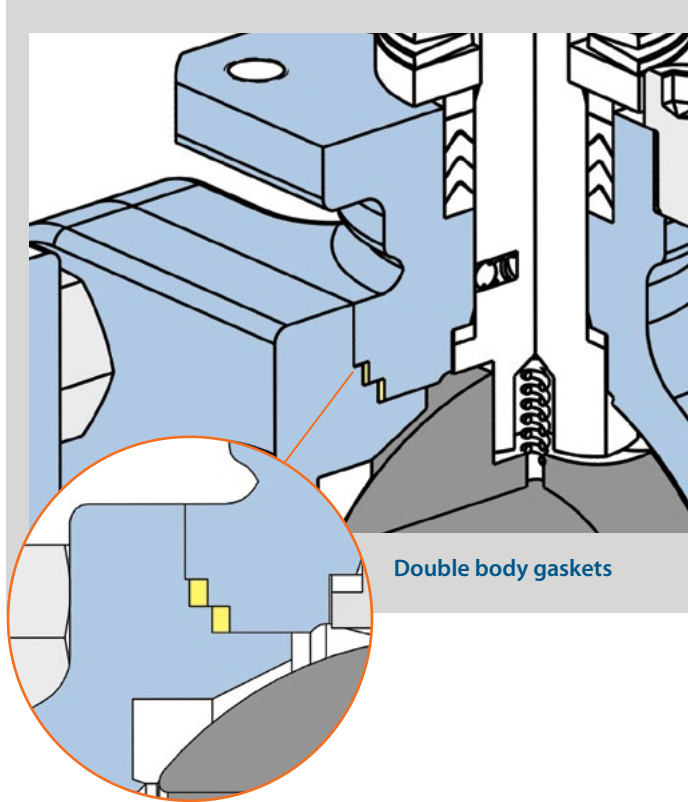
Tight in-line sealing, even under low differential pressure situations is achieved via the pre-loaded resilient PTFE seats. In applications where a pressure drop exists, the force of the differential pressure pushes the floating ball downstream to compress the seat to create a tight, pressure assisted seal. Optional seat materials include RPTFE, Hi-Temp, PEEK, and others. FluoroSeal resilient seats are self-relieving as standard.



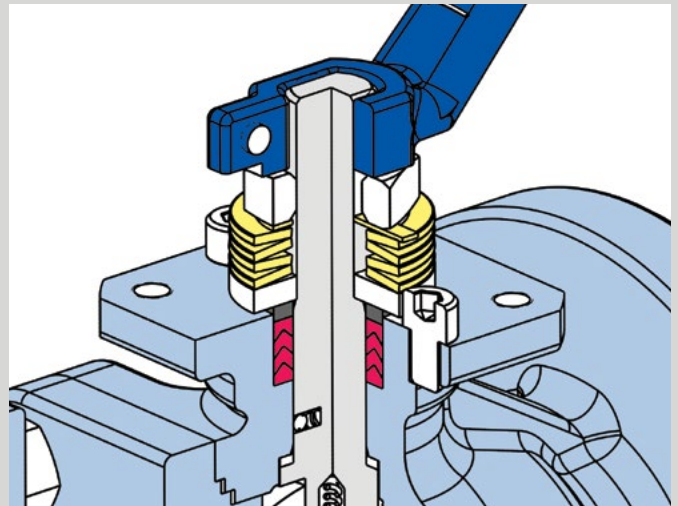
PTFE Seats

### • ATMOSPHERIC SEALING

FluoroSeal's standard stem seal utilizes a precision machined packing chamber with standard PTFE or optional flexible graphite packing which is loaded by a gland to achieve extremely low emissions. Optional live loading of the stem packing is available to meet the most stringent emissions requirements. Both one and two piece body designs incorporate dual body joint seals to prevent emissions.



Double body gaskets



Live loaded stem packing

### • ISO MOUNTING

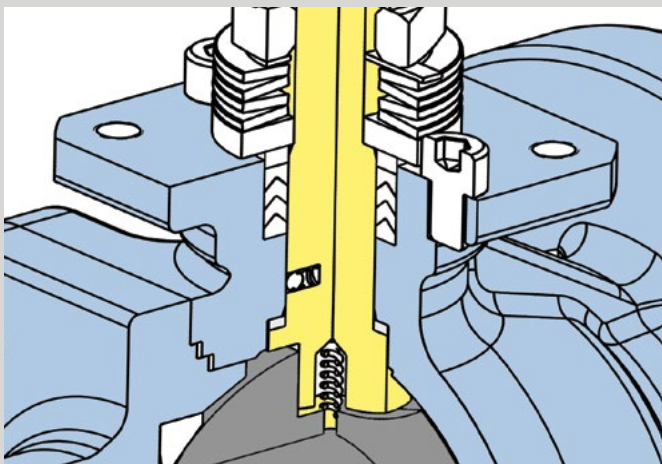
All FluoroSeal one and two piece floating ball valves come standard with mounting pad design in accordance with ISO 5211.

### • BLOW-OUT PROOF STEM

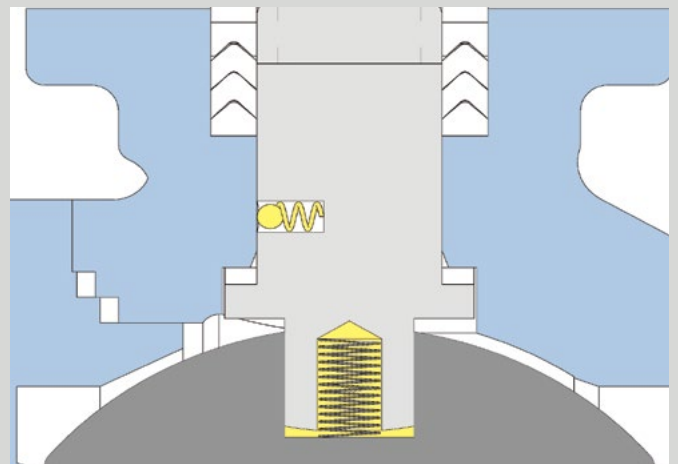
FluoroSeal's internally installed stem utilizes a machined shoulder to retain the stem in the valve under all pressure conditions.

### • ANTI-STATIC DEVICE

Electrical continuity between the ball/stem and the stem/body is achieved through the use of spring loaded pins.



Blow-Out Proof Stem



Anti-static Device



## OPTIONS

### • FIRESAFE DESIGN

FluoroSeal's one and two piece fire safe floating ball valves have been qualified to the requirements of API 607. In the event that the valve is subjected to an elevated temperature condition and the resilient seats and seals are damaged, back-up metal seating provides an in-line seal while graphite stem seals and graphite body joint seals provide atmospheric sealing.

### • STEM JOURNAL LUBRICATION

Ensures smooth operation over long periods of time, even in low cycle frequency applications.

### • LOCKING DEVICE

Locking devices are available to lock the FluoroSeal floating ball valves in either the fully open or closed positions. Locking devices are available for both wrench and gear operators.

### • VENTED BALL

Vented balls can be supplied for applications where excess pressure build up in the ball/body cavity is a concern when in the closed position. Process media is vented upstream preventing potential damage to valve internals.

## DESIGN AND TESTING STANDARDS

API 6D, API SPEC Q1

Valve Design

ANSI B16.10

Face-to-Face and End-to-End Dimensions of Valves

ANSI B16.34 / API 608 / BS 5351

Valves, Flanged and Butt Weld End

API 607 / ISO 10497 / BS 6755

Specification for Fire Test for Valves

MSS SP-6

Standard Finishes for Contact Faces of Pipe Flanges and Connecting-End Flanges of Valves and Fittings

ANSI B16.5 / ISO 5211

1/2" – 12" Pipe Flanges and Flanged Fittings

MSS SP-61

Pressure Testing of Valves

ASTM / ANSI / EN

Materials

ISO 15848-1

Fugitive Emissions

API 598

Valve Inspection and Testing

MSS SP-25

Standard Marking System for Valves, Fittings, and Unions

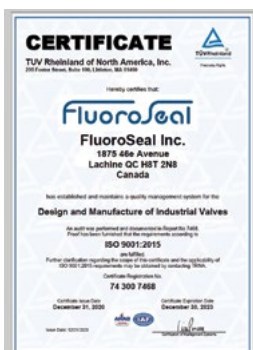
MSS SP-55

Quality Standard for Steel Castings for Valves

## QUALITY ASSURANCE

FluoroSeal Valves are designed with the best features presently available on the market. They are inspected throughout the manufacturing process to assure high quality and consistency in every unit.

### ISO 9001: 2015



Design and Manufacture of Industrial Valves

### ANSI/API 6FA



Fire Test Certificate





At FluoroSeal, we are inspired and committed to developing innovative flow control solutions for every industry we serve.



For over 38 years, FluoroSeal has been manufacturing and customizing a wide range of valves, parts, and accessories for various industries such as Oil & Gas, Chemical, Petrochemical, Power, Pharmaceutical, and Mining. Our client-oriented culture allows us to understand complex industry needs and meet the highest quality standards - that is why our manufacturing processes are ISO 9001:2015, and PED 2014/68/EU certified.

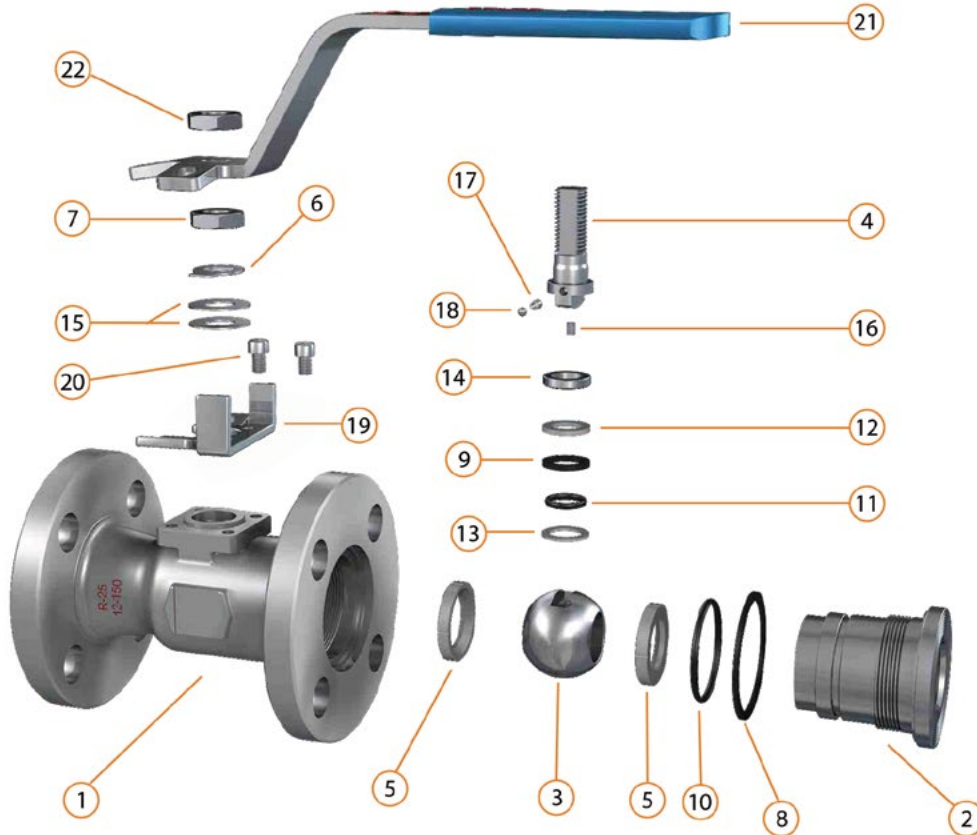
Our wholly owned foundries and manufacturing plants enhance our capability to offer an extensive range of high quality valves at competitive prices in a wide range of exotic alloys on demand. With its large network of warehouses, distributors, and representatives, FluoroSeal is capable of delivering valve products, technical support, and complementary services worldwide and is able to support its customers with quick deliveries in case of emergencies and unscheduled shutdowns.

Our product offering is continuously evolving thanks to our team of highly skilled designers, engineers, and metallurgists who ensure the application of the latest technologies in CAD software, production methods, machinery, quality control procedures, and product testing to all of our products.

## STANDARD CONFIGURATION - BG1 WITH WRENCH

### UNIBODY CAST STEEL FLOATING BALL VALVE, SOFT SEATED

Class 150 & 300: 1/2" to 1 1/2"



#### No. Description/Part

1	Body
2	End Cap
3	Ball
4	Stem
5	Seat
6	Locking Plate
7	Nut Lock
8	Body Gasket
9	Stem Packing
10	O-ring
11	O-ring
12	Stem Packing
13	Thrust Washer
14	Gland
15	Belleville Spring
16	Antistatic Spring
17	Antistatic Spring

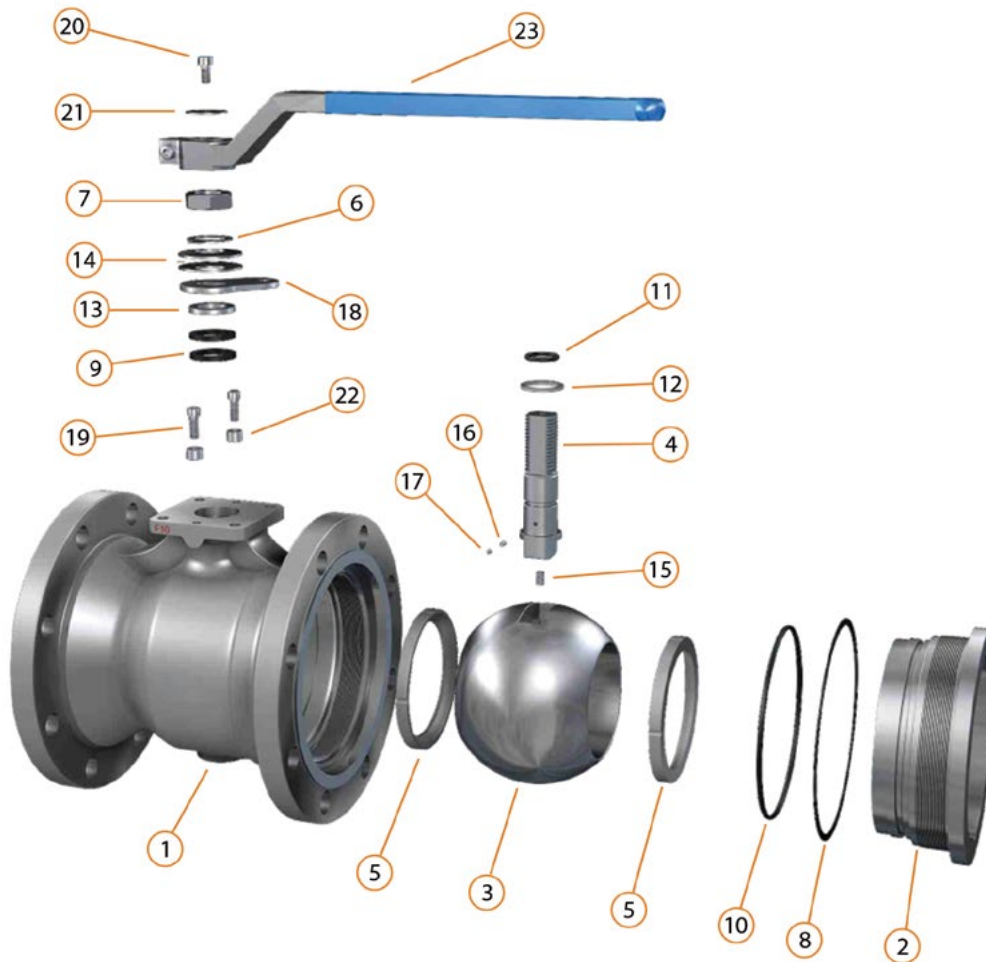
#### No. Description/Part

18	Antistatic Ball
19	Position Plate
20	Packing Gland Screw
21	Wrench
22	Lever Nut



### UNIBODY CAST STEEL FLOATING BALL VALVE, SOFT SEATED

Class 150: 3" to 8" / Class 300: 3" to 6"

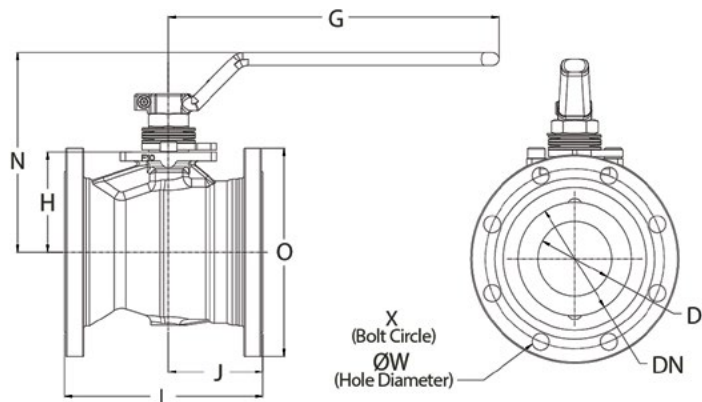


#### No. Description/Part

1	Body
2	End Cap
3	Ball
4	Stem
5	Seat
6	Washer
7	Nut Lock
8	Body Gasket
9	Stem Packing
10	O-ring
11	O-ring
12	Thrust Washer
13	Gland
14	Belleville Spring
15	Antistatic Spring
16	Antistatic Spring
17	Antistatic Ball

#### No. Description/Part

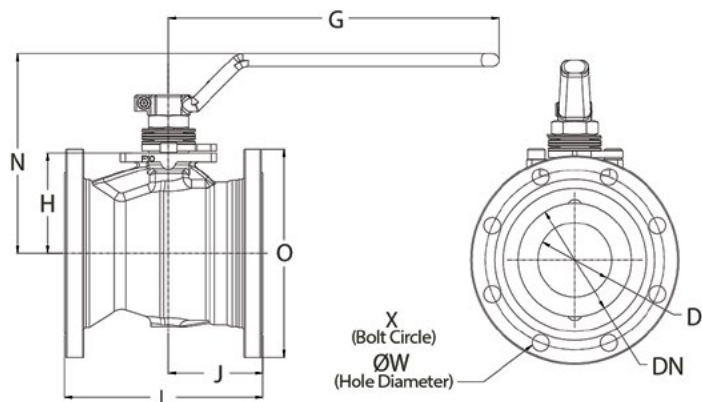
18	Locking Plate
19	Screw
20	Screw
21	Washer
22	Sleeve
23	Wrench



**UNIBODY FLOATING BALL VALVE**  
**SOFT SEATED - REDUCED BORE**  
**ANSI CLASS 150**  
 SIZE 1/2" to 8"  
 Wrench Operated

**ANSI CLASS 150**

Size	D		DN		O		L		J		W		X		V	H		N		G		Weight	
in mm	in	mm	in	mm	in	mm	in	mm	in	mm	in	mm	in	mm	Holes	in	mm	in	mm	in	mm	lb	kg
1/2" 15	0.4	11	0.6	15.0	3.5	90	4.3	108	2.1	53.0	0.6	16.0	2.4	60.3	4	0.7	18.7	3.7	93.6	6.3	160	3.3	1.5
3/4" 20	0.6	14	0.8	20.8	3.9	100	4.6	117	2.3	59.6	0.6	16.0	2.8	69.9	4	1.1	27.7	4.1	103.5	6.3	160	5.5	2.5
1" 25	0.7	19	1.0	25.4	4.3	110	5.0	127	2.4	61.1	0.6	16.0	3.1	79.4	4	1.3	32.5	4.3	108.5	7.1	180	6.6	3.0
1 1/2" 40	1.2	30	1.5	38.0	4.9	125	6.5	165	3.0	76.3	0.6	16.0	3.9	98.4	4	1.9	49.5	4.9	125.0	9.4	240	14.3	6.5
2" 50	1.5	38	2.0	51.0	5.9	150	7.0	178	3.1	80.0	0.7	19.0	4.8	120.7	4	2.2	55.0	5.2	131.0	9.4	240	19.8	9.0
3" 80	2.4	62	3.0	76.0	7.5	190	8.0	203	3.5	88.6	0.7	19.0	6.0	152.4	4	3.8	95.5	6.7	169.5	11.8	300	40.8	18.5
4" 100	3.0	76	4.0	101.5	9.1	230	9.0	229	4.1	104.6	0.7	19.0	7.5	190.5	8	4.6	117.0	8.1	207.0	15.7	400	67.2	30.5
6" 150	3.9	100	6.0	152.5	11.0	280	10.5	267	5.0	127.0	0.9	22.2	9.5	241.3	8	5.3	135.0	8.7	222.0	15.7	400	101.4	46.0
8" 200	5.7	144	8.0	202.5	13.6	345	11.5	292	5.7	146.0	0.9	22.2	11.8	298.5	8	7.4	187.5	11.2	283.5	19.7	500	195.1	88.5

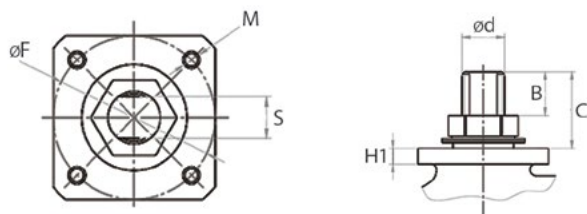


**UNIBODY FLOATING BALL VALVE**  
**SOFT SEATED - REDUCED BORE**  
**ANSI CLASS 300**  
 SIZE 1/2" to 6"  
 Wrench Operated

**ANSI CLASS 300**

Size	D		DN		O		L		J		W		X		V	H		N		G		Weight	
in mm	in	mm	in	mm	in	mm	in	mm	in	mm	in	mm	in	mm	Holes	in	mm	in	mm	in	mm	lb	kg
1/2" 15	0.4	11	0.6	15.0	3.7	95	5.5	139.7	2.1	53.0	0.6	16.0	2.6	66.7	4	0.7	18.7	3.7	93.6	6.3	160	4.4	2.0
3/4" 20	0.6	14	0.8	20.8	4.5	115	6.0	152.4	2.3	59.6	0.7	19.0	3.3	82.6	4	1.1	27.7	4.0	100.5	6.3	160	7.7	3.5
1" 25	0.7	19	1.0	25.4	4.9	125	6.5	165.0	2.4	61.1	0.7	19.0	3.5	88.9	4	1.3	32.5	4.3	108.5	7.1	180	9.9	4.5
1 1/2" 40	1.2	30	1.5	38.0	6.1	155	7.5	190.5	3.0	76.3	0.9	22.2	4.5	114.3	4	1.9	49.5	4.9	125.0	9.4	240	19.8	9.0
2" 50	1.5	38	2.0	51.0	6.5	165	8.5	216.0	3.1	80.0	0.7	19.0	5.0	127.0	8	2.3	55.0	5.2	131.0	9.4	240	25.4	11.5
3" 80	2.4	62	3.0	76.0	8.3	210	11.1	282.5	3.5	88.6	0.9	22.2	6.6	168.3	8	3.8	95.5	6.7	169.5	11.8	300	56.2	25.5
4" 100	3.0	76	4.0	101.5	10.0	255	12.0	304.8	4.1	104.6	0.9	22.2	7.9	200.0	8	4.6	117.0	8.1	207.0	15.7	400	95.9	43.5
6" 150	3.9	100	6.0	152.5	12.6	320	15.9	403.0	5.0	127.0	0.9	22.2	10.6	270.0	12	5.3	135.0	8.7	222.0	15.7	400	169.8	77.0





**UNIBODY FLOATING BALL VALVE**  
**SOFT SEATED - REDUCED BORE**  
**CLASS 150 & 300**  
 SIZE 1/2" to 2"  
 Wrench Operated

BG1  
VALVES

ANSI CLASS 150 & 300													
Size		ØF		ØM	S		H1		Ød	B		C	
in	mm	in	mm		in	mm	in	mm		in	mm	in	mm
1/2"	15	1.4	36	M5	0.3	7	0.2	6	M10	0.3	8	0.7	18.0
3/4"	20	1.4	36	M5	0.3	7	0.2	6	M10	0.4	10	0.9	22.7
1"	25	1.4	36	M5	0.4	9	0.2	6	M12	0.5	12	1.0	25.5
1 1/2"	40	2.0	50	M6	0.6	14	0.3	7	M18	0.7	19	1.4	35.5
2"	50	2.0	50	M6	0.6	14	0.3	7	M18	0.6	15	1.3	34.0

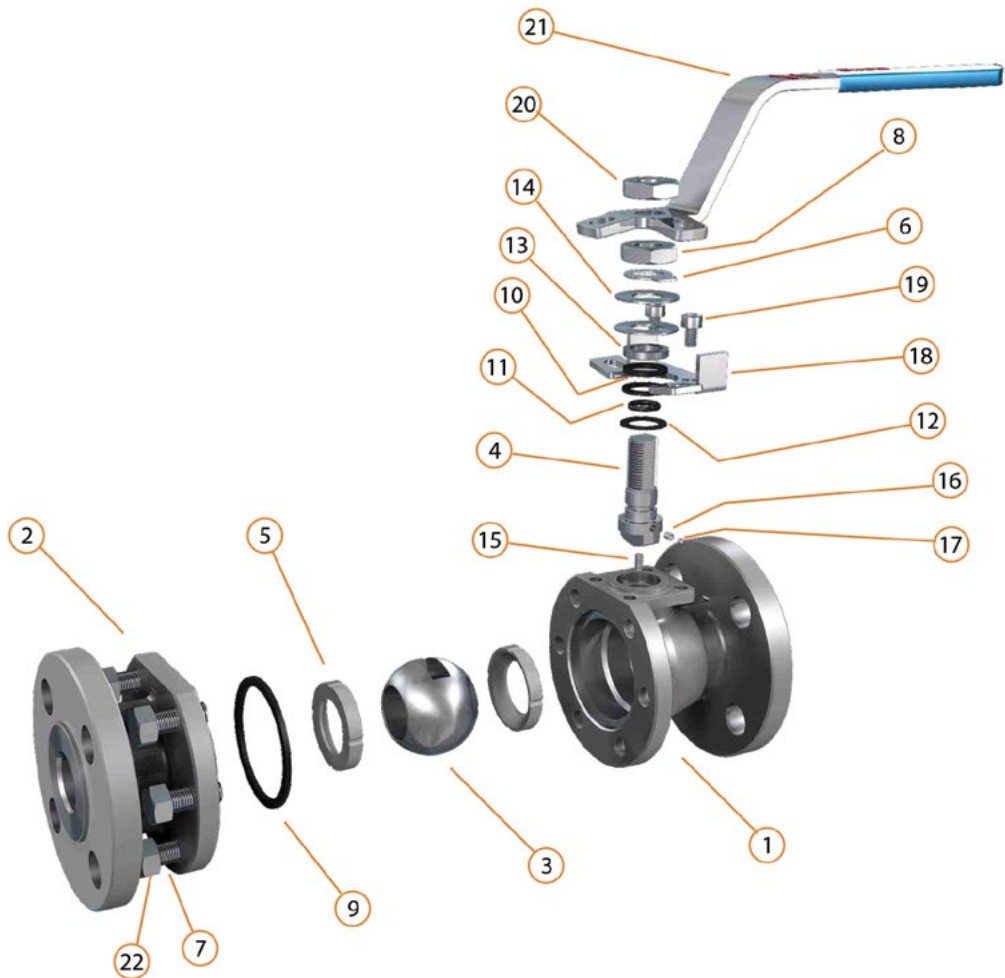
### NOTES:

1. The information on this catalog is provided for general informational purposes only.
2. Customization for specific applications is available upon request.
3. For all technical parameters of the product please contact your local FluoroSeal sales office or authorized representative.
4. We reserve the right to make changes without prior notice.

2-PIECE BODY CAST STEEL FLOATING BALL VALVE, SOFT SEATED

Class 150 & 300 1/2" to 1 1/2"

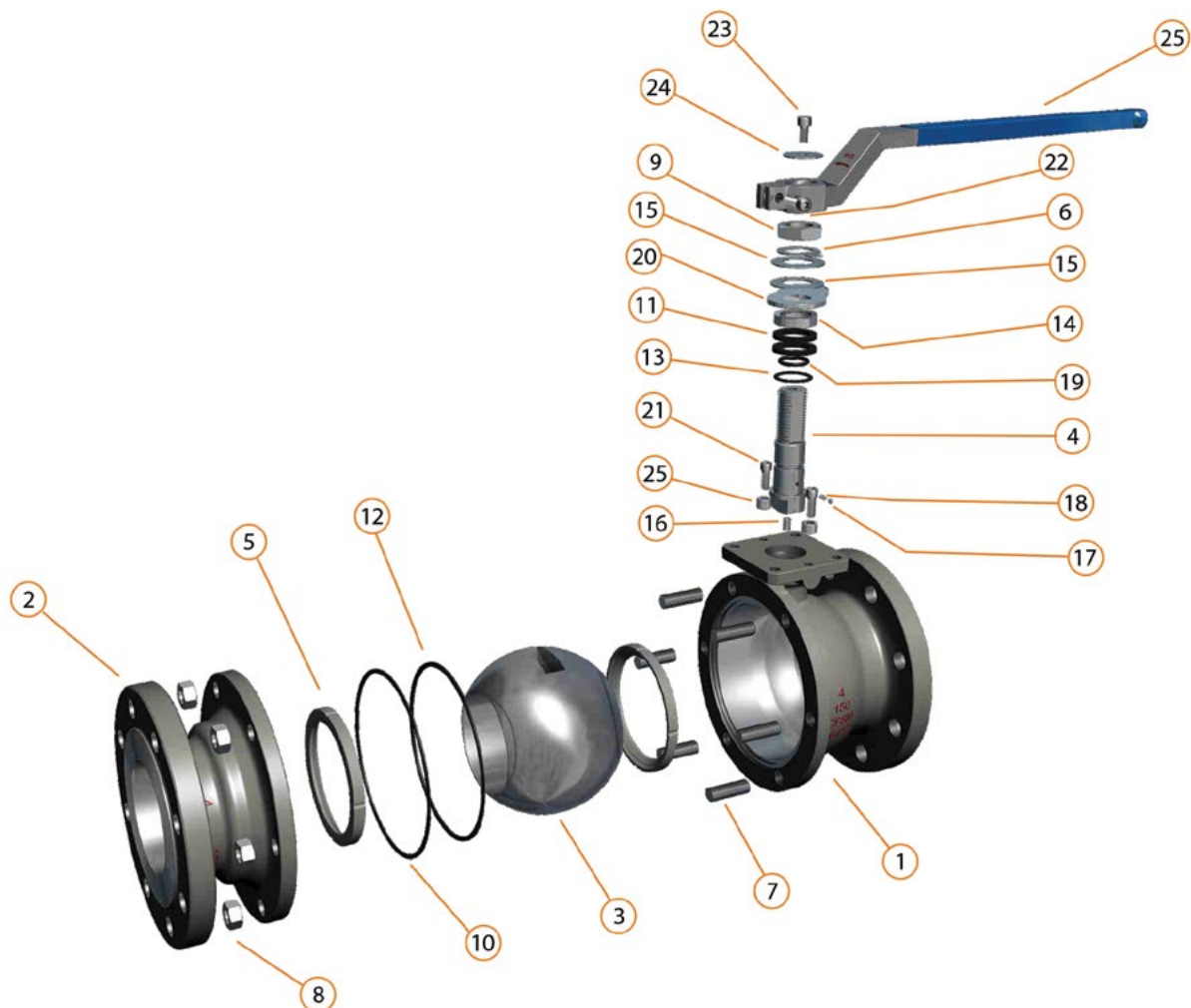
BG2  
VALVES



No.	Description/Part	No.	Description/Part
1	Body	18	Position Plate
2	End Cap	19	Travel Stop Screw
3	Ball	20	Wrench Nut
4	Stem	21	Wrench
5	Seat	22	Body Nut
6	Locking Plate		
7	Screw		
8	Packing Nut		
9	Body Gasket		
10	O-ring		
11	Stem Packing		
12	Thrust Washer		
13	Gland		
14	Belleville Spring		
15	Antistatic Spring		
16	Antistatic Spring		
17	Antistatic Ball		

### 2-PIECE BODY CAST STEEL FLOATING BALL VALVE, SOFT SEATED

Full Bore - Class 150 & 300: 2" to 6" / Class 600 2" to 4" / Reduced Bore - Class 150 & 300: 2" to 8" / Class 600: 2" to 4"



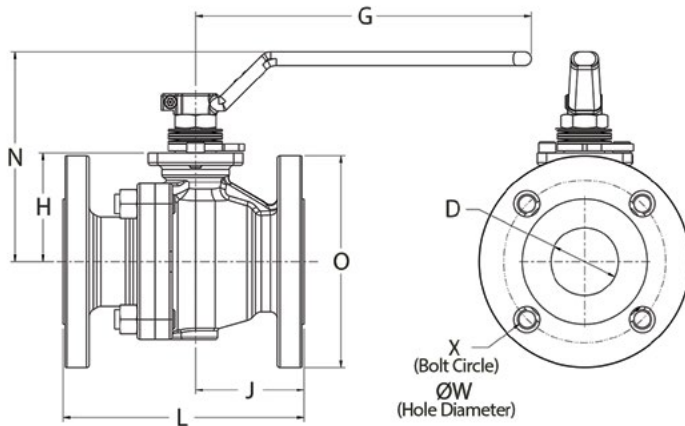
#### No. Description/Part

1	Body
2	End Cap
3	Ball
4	Stem
5	Seat
6	Washer
7	Bolt
8	Nut
9	Packing Nut
10	Body Gasket
11	Stem Packing
12	Washer
13	Thrust Washer
14	Gland
15	Belleville Spring
16	Antistatic Spring
17	Antistatic Spring

#### No. Description/Part

18	Antistatic Ball
19	O-ring
20	Locking Plate
21	Travel Stop Screw
22	Screw
23	Screw
24	Washer
25	Wrench

## DIMENSIONS & WEIGHTS - BG2 WITH WRENCH



### 2-PIECE FLOATING BALL VALVE SOFT SEATED - FULL BORE ANSI CLASS 150 & 300

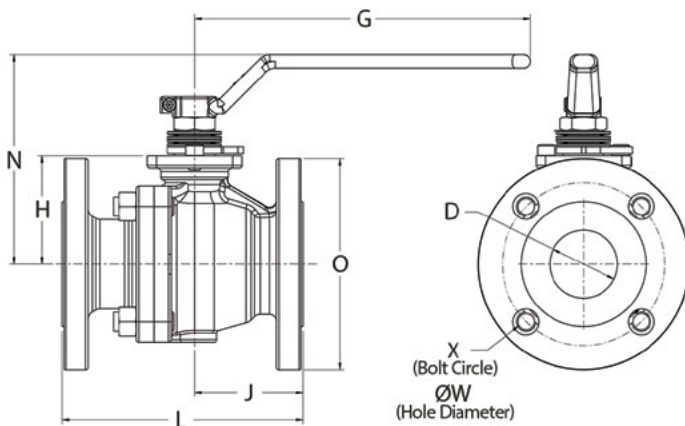
SIZE 1/2" to 6"  
Wrench Operated

#### ANSI CLASS 150

Size		D		O		L		J		W		X		V	H		N		G		Weight	
in	mm	in	mm	in	mm	in	mm	in	mm	in	mm	in	mm	Holes	in	mm	in	mm	in	mm	lb	kg
1/2"	15	0.6	14	3.5	90	4.3	108	1.9	47.0	0.6	16	2.4	60.3	4	1.4	36.0	4.3	109.0	6.3	160	4.0	1.8
3/4"	20	0.7	19	3.9	100	4.6	117	2.1	53.0	0.6	16	2.8	69.9	4	1.6	41.5	4.5	115.0	7.1	180	4.4	2.0
1"	25	1.0	25	4.3	110	5.0	127	2.2	55.5	0.6	16	3.1	79.4	4	1.7	43.0	4.7	120.0	7.1	180	7.9	3.6
1 1/2"	40	1.5	38	4.9	125	6.5	165	3.0	75.0	0.6	16	3.9	98.4	4	2.3	57.5	5.1	130.0	9.4	240	15.9	7.2
2"	50	2.0	50	6.0	150	7.0	178	3.1	80.0	0.7	19	4.8	120.7	4	3.5	89.0	5.7	146.0	9.4	240	24.5	11.1
3"	80	3.0	76	7.5	190	8.0	203	3.7	95.0	0.7	19	6.0	152.4	4	4.6	117.0	7.9	200.0	15.7	400	48.5	22.0
4"	100	3.9	100	9.0	230	9.0	229	4.1	104.0	0.7	19	7.5	190.5	8	5.3	135.0	8.9	225.0	15.7	400	110.2	50.0
6"	150	5.9	151	11.0	280	15.5	394	6.9	175.0	0.9	22.2	9.5	241.3	8	7.7	195.0	11.5	291.0	23.6	600	238.1	108.0

#### ANSI CLASS 300

Size		D		O		L		J		W		X		V	H		N		G		Weight	
in	mm	in	mm	in	mm	in	mm	in	mm	in	mm	in	mm	Holes	in	mm	in	mm	in	mm	lb	kg
1/2"	15	0.6	14	3.7	95	5.5	140	2.0	52	0.6	16.0	2.6	66.7	4	1.4	36.0	4.3	109	6.3	160	5.1	2.3
3/4"	20	0.7	19	4.5	115	6.0	152	2.1	53	0.7	19.0	3.2	82.5	4	1.6	41.5	4.5	115	7.1	180	7.9	3.6
1"	25	1.0	25	4.9	125	6.5	165	2.4	60	0.7	19.0	3.5	88.9	4	1.7	43.0	4.7	120	7.1	180	11.2	5.1
1 1/2"	40	1.5	38	6.1	155	7.5	190	3.0	75	0.9	22.2	4.5	114.3	4	2.3	57.5	5.1	130	9.4	240	22.0	10.0
2"	50	2.0	50	6.5	165	8.5	216	3.1	80	0.7	19.0	5.0	127.0	8	3.5	89.0	5.7	146	9.4	240	30.9	14.0
3"	80	3.0	76	8.3	210	11.1	283	3.7	95	0.9	22.2	6.6	168.3	8	4.6	117.0	7.9	200	15.7	400	67.5	30.6
4"	100	3.9	100	10.0	255	12.0	305	4.1	104	0.9	22.2	7.9	200.0	8	5.3	135.0	8.9	225	15.7	400	116.8	53.0
6"	150	5.9	151	12.6	320	15.9	403	6.9	175	0.9	22.2	10.6	269.9	12	7.7	195.0	11.5	291	31.5	800	255.7	116.0



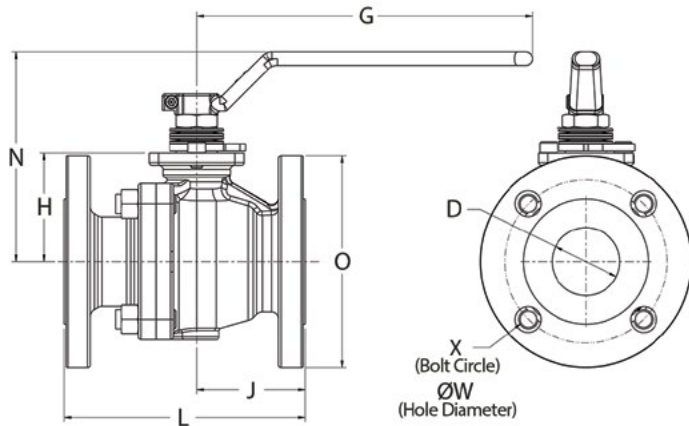
### 2-PIECE FLOATING BALL VALVE SOFT SEATED - FULL BORE ANSI CLASS 600

SIZE 2" to 4"  
Wrench Operated

#### ANSI CLASS 600

Size		D		O		L		J		W		X		V	H		N		G		Weight	
in	mm	in	mm	in	mm	in	mm	in	mm	in	mm	in	mm	Holes	in	mm	in	mm	in	mm	lb	kg
2"	50	2.0	50	6.0	150	11.5	292	4.5	113.5	0.7	19.0	5.0	127.0	8	3.0	77	5.9	151	13.4	340	47.8	21.7
3"	80	3.0	76	8.3	210	14.0	356	6.0	153.0	0.9	22.2	6.6	168.3	8	4.2	106	8.0	204	14.4	367	108.5	49.2
4"	100	3.9	100	10.8	275	17.0	432	7.0	178.0	1.0	25.4	8.5	215.9	8	5.9	150	8.0	204	24.0	610	213.6	96.9



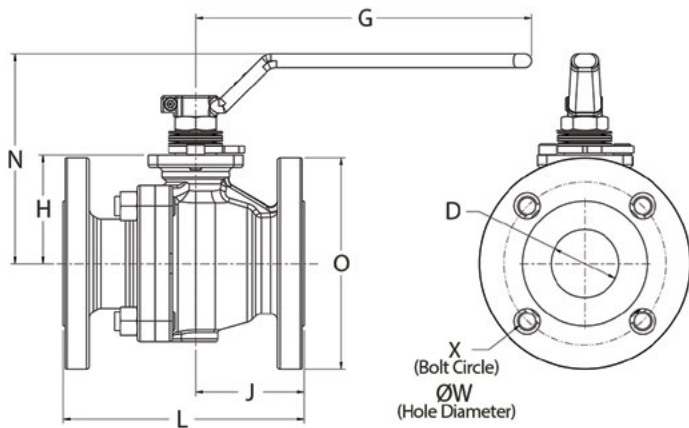


**2-PIECE FLOATING BALL VALVE  
SOFT SEATED- REDUCED BORE  
ANSI CLASS 150 & 300**

SIZE 2" to 8"  
Wrench Operated

ANSI CLASS 150																								
Size		D		DN		O		L		J		W		X		V	H		N		G		Weight	
in	mm	in	mm	in	mm	in	mm	in	mm	in	mm	in	mm	in	mm	Holes	in	mm	in	mm	in	mm	lb	kg
2"	50	1.5	38	2.0	50	5.9	150	7.0	178	3.1	80	0.7	19.0	4.8	120.7	4	2.2	55.0	4.4	112.5	9.4	240	19.8	9.0
3"	80	2.0	50	3.0	76	7.5	190	8.0	203	3.5	90	0.7	19.0	6.0	152.4	4	3.1	80.0	5.7	146.0	9.4	240	35.3	16.0
4"	100	3.0	76	3.9	100	9.1	230	9.0	229	3.9	100	0.7	19.0	7.5	190.5	8	4.5	115.0	7.9	200.0	15.7	400	65.0	29.5
6"	150	3.9	100	5.9	151	11.0	280	15.5	394	5.9	150	0.9	22.2	9.5	241.3	8	5.3	135.0	8.7	221.0	15.7	400	105.8	48.0
8"	200	5.9	151	8.0	202	13.6	345	18.0	457	7.9	200	0.9	22.2	11.8	298.5	8	7.7	195.0	11.3	286.0	23.6	600	271.2	123.0

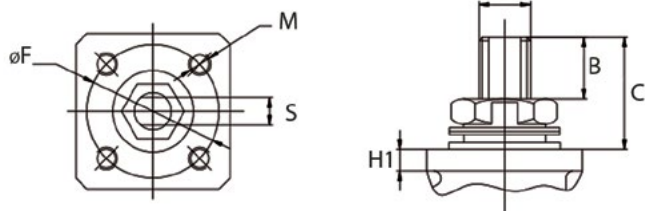
ANSI CLASS 300																								
Size		D		DN		O		L		J		W		X		V	H		N		G		Weight	
in	mm	in	mm	in	mm	in	mm	in	mm	in	mm	in	mm	in	mm	Holes	in	mm	in	mm	in	mm	lb	kg
2"	50	1.5	38	2.0	50	6.5	165	8.5	216	3.7	95	0.7	19.0	5.0	127.0	8	2.2	55.5	4.4	112.5	9.4	240	24.3	11.0
3"	80	2.0	50	3.0	76	8.3	210	11.1	283	4.3	110	0.9	22.2	6.6	168.3	8	3.1	80.0	5.7	146.0	9.4	240	66.1	30.0
4"	100	3.0	76	3.9	100	10.0	255	12.0	305	4.9	125	0.9	22.2	7.9	200.0	8	4.5	115.0	7.9	200.0	15.7	400	86.0	39.0
6"	150	3.9	100	5.9	151	12.6	320	15.9	403	6.3	160	0.9	22.2	10.6	269.9	12	5.3	135.0	8.7	221.0	15.7	400	159.8	72.5
8"	200	5.6	151	8.0	202	15.0	380	19.8	502	8.9	225	1.0	25.4	13.0	330.2	12	7.7	195.0	11.3	286.0	31.5	800	326.3	148.0



**2-PIECE FLOATING BALL VALVE  
SOFT SEATED - REDUCED BORE  
ANSI CLASS 600**

SIZE 2" to 4"  
Wrench Operated

ANSI CLASS 600																								
Size		D		DN		O		L		J		W		X		V	H		N		G		Weight	
in	mm	in	mm	in	mm	in	mm	in	mm	in	mm	in	mm	in	mm	Holes	in	mm	in	mm	in	mm	lb	kg
2"	50	1.5	38	2.0	50	6.5	165	11.5	292	4.6	117.5	0.7	19.0	5.0	127.0	8	2.6	67	5.6	141	13.4	340	42.3	19.2
3"	80	2.0	50	3.0	76	8.3	210	14.0	356	6.2	158.5	0.9	22.2	6.6	168.3	8	3.0	77	5.9	151	13.4	340	69.0	31.3
4"	100	3.0	76	3.9	100	10.8	275	17.0	432	8.0	203.0	1.0	25.4	8.5	215.9	8	4.2	106	8.0	204	14.4	367	167.6	76.0



## 2-PIECE FLOATING BALL VALVE SOFT SEATED - FULL BORE CLASS 150, 300 & 600

SIZE 1/2" to 6"  
 Wrench Operated

ANSI CLASS 150

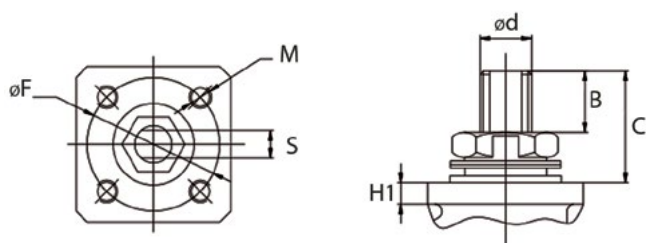
Size		$\phi F$		M	S		H1		$\phi d$	B		C	
in	mm	in	mm		in	mm	in	mm		in	mm	in	mm
1/2"	15	1.4	36	M5	0.3	7	0.2	5.0	M10	0.3	8.5	0.7	18.5
3/4"	20	1.4	36	M5	0.4	9	0.2	5.0	M12	0.5	11.5	1.0	25.0
1"	25	1.7	42	M5	0.4	11	0.2	6.0	M14	0.7	17.0	1.1	27.5
1 1/2"	40	2.0	50	M6	0.6	14	0.3	7.5	M18	0.9	23.0	1.3	33.0
2"	50	2.8	70	M8	0.5	13	0.4	10.0	M18	0.6	14.0	1.4	36.0
3"	80	4.0	102	M10	0.8	20	0.5	12.0	M27	0.9	23.0	2.1	52.5
4"	100	4.0	102	M10	0.8	20	0.5	12.0	M27	0.9	23.0	2.1	52.5
6"	150	4.9	125	M12	0.9	24	0.6	16.0	M36	1.0	26.5	2.5	62.5

ANSI CLASS 300

Size		$\phi F$		M	S		H1		$\phi d$	B		C	
in	mm	in	mm		in	mm	in	mm		in	mm	in	mm
1/2"	15	1.4	36	M5	0.3	7	0.2	5.0	M10	0.3	8.5	0.7	18.5
3/4"	20	1.4	36	M5	0.3	8	0.2	5.0	M12	0.5	11.5	1.0	25.0
1"	25	1.7	42	M5	0.4	11	0.2	6.0	M14	0.7	17.0	1.1	27.5
1 1/2"	40	2.0	50	M6	0.6	14	0.3	7.5	M18	0.9	23.0	1.3	33.0
2"	50	2.8	70	M8	0.5	13	0.4	10.0	M18	0.6	14.0	1.4	36.0
3"	80	4.0	102	M10	0.8	20	0.5	12.0	M27	0.9	23.0	2.1	52.5
4"	100	4.0	102	M10	0.8	20	0.5	12.0	M30	0.9	23.0	2.2	55.0
6"	150	4.9	125	M12	1.1	28	0.6	16.0	M40	1.1	28.0	2.5	64.0

ANSI CLASS 600

Size		$\phi F$		M	S		H1		$\phi d$	B		C	
in	mm	in	mm		in	mm	in	mm		in	mm	in	mm
2"	50	2.8	70	M8	0.5	12	0.3	8.5	M22	0.5	12.0	1.5	37
3"	80	4.0	102	M10	0.8	20	0.5	12.0	M30	1.0	24.5	2.5	63
4"	100	4.0	102	M10	1.1	28	0.5	11.5	M40	0.8	21.5	2.5	64



**2-PIECE FLOATING BALL VALVE  
SOFT SEATED (CAST STEEL BODY)  
REDUCED BORE - CLASS 150, 300 & 600**  
SIZE 2" to 8"  
Wrench Operated

BG2  
VALVES

ANSI CLASS 150													
Size		ØF		M	S		H1		Ød	B		C	
in	mm	in	mm		in	mm	in	mm		in	mm	in	mm
2"	50	2.0	50	M6	0.5	13	0.3	8.0	M18	0.5	13.5	1.3	33.0
3"	80	2.8	70	M8	0.5	13	0.4	9.0	M18	0.7	17.0	1.5	37.0
4"	100	4.0	102	M10	0.8	20	0.5	12.0	M27	1.0	25.0	2.0	52.0
6"	150	4.0	102	M10	0.8	20	0.5	12.0	M27	1.0	26.0	2.1	53.0
8"	200	4.9	125	M12	0.9	24	0.6	16.0	M36	1.4	35.0	2.4	62.0

ANSI CLASS 300													
Size		ØF		M	S		H1		Ød	B		C	
in	mm	in	mm		in	mm	in	mm		in	mm	in	mm
2"	50	2.0	50	M6	0.5	13	0.3	8.0	M18	0.5	13.5	1.3	33.0
3"	80	2.8	70	M8	0.5	13	0.4	9.0	M18	0.7	17.0	1.5	37.0
4"	100	4.0	102	M10	0.8	20	0.5	12.0	M27	1.0	25.0	2.0	52.0
6"	150	4.0	102	M10	0.8	20	0.5	12.0	M30	1.0	25.5	2.2	55.0
8"	200	4.9	125	M12	1.1	28	0.6	16.0	M40	1.0	26.0	2.4	62.0

ANSI CLASS 600													
Size		ØF		M	S		H1		Ød	B		C	
in	mm	in	mm		in	mm	in	mm		in	mm	in	mm
2"	50	2.8	70	M8	0.5	12	0.3	8.4	M22	0.4	11.0	1.4	35.0
3"	80	2.8	70	M8	0.5	12	0.4	10.0	M22	0.5	12.0	1.5	37.0
4"	100	4.0	102	M10	0.8	20	0.6	15.0	M30	1.0	24.5	2.4	61.5

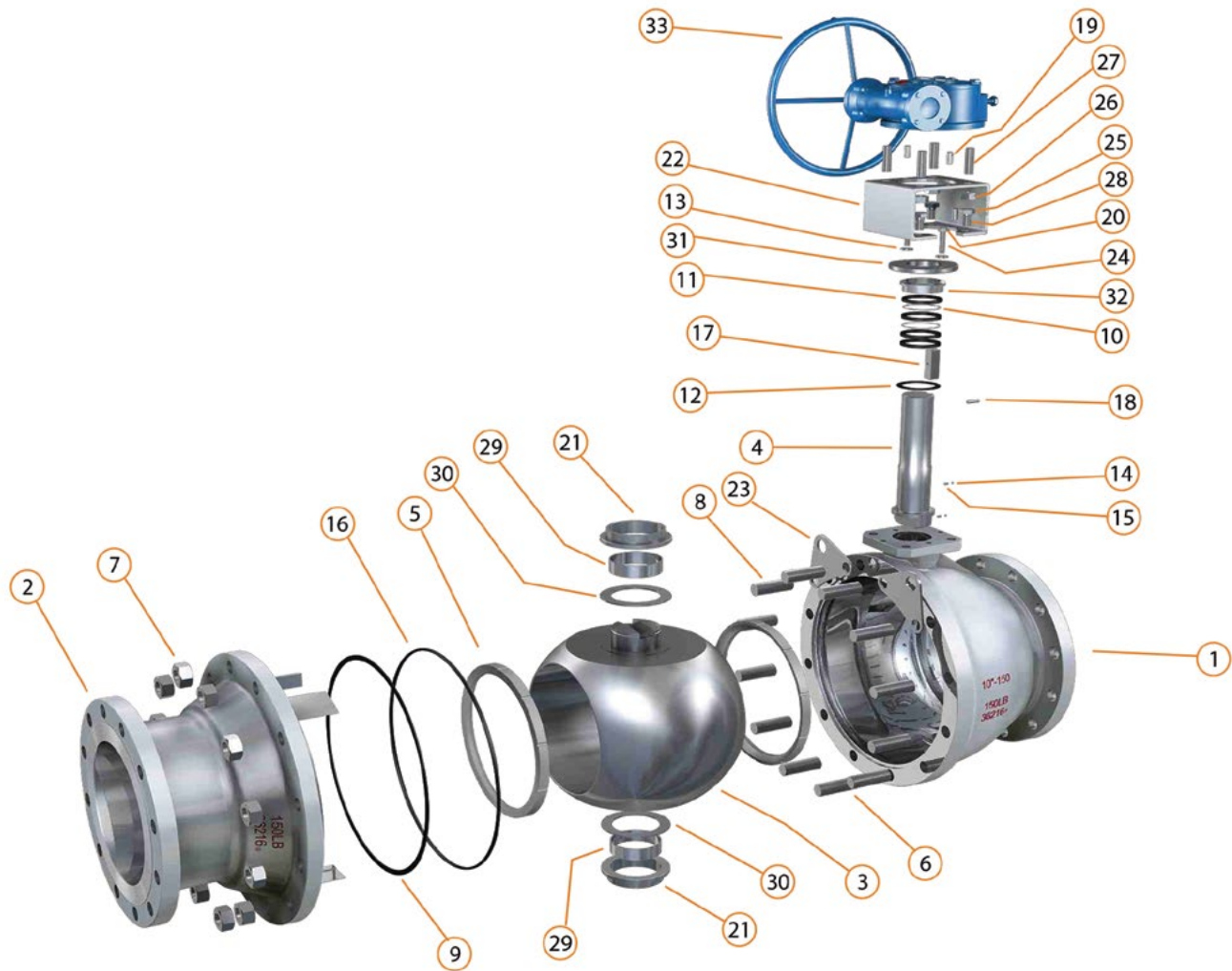
### NOTES:

1. The information on this catalog is provided for general informational purposes only.
2. Customization for specific applications is available upon request.
3. For all technical parameters of the product please contact your local FluoroSeal sales office or authorized representative.
4. We reserve the right to make changes without prior notice.

2-PIECE BODY CAST STEEL FLOATING BALL VALVE, SOFT SEATED

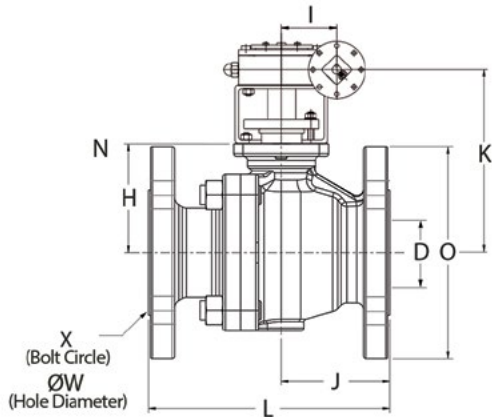
Full Bore - Class 150: 6" to 12" / Class 300 6" to 12" / Reduced Bore - Class 150 & 300: 8" to 10"

BG2  
VALVES



No.	Description/Part	No.	Description/Part
1	Body	18	Key
2	End Cap	19	Pin
3	Ball	20	Pin
4	Stem	21	Pin
5	Seat	22	Trunnion
6	Bolt	23	Yoke
7	Nut	24	Lifting eye
8	Bolt	25	Bolt
9	Body Gasket	26	Nut
10	Stem Packing	27	Bolt
11	Stem Packing	28	Nut
12	Thrust Washer	29	Screw
13	Belleville Spring	30	Bearing
14	Antistatic Spring	31	Washer
15	Antistatic Spring	32	Retainer Plate
16	Antistatic Ball	33	Packing Gland
17	O-ring	34	Gear

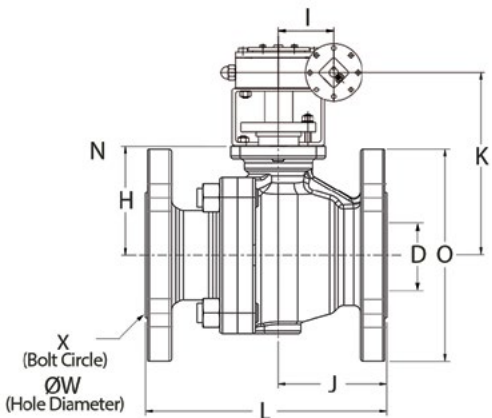




**2-PIECE FLOATING BALL VALVE**  
**SOFT SEATED - FULL BORE**  
**CLASS 150 & 300**  
SIZE 6" to 12"  
Enclosed Gear Operated

ANSI CLASS 150																						
Size		D		O		L		J		W		X		V	H		K		I		Weight	
in	mm	in	mm	in	mm	in	mm	in	mm	in	mm	in	mm	Holes	in	mm	in	mm	in	mm	lb	kg
6"	150	5.9	151	11.0	280	15.5	394	6.9	175.0	0.9	22.2	9.5	241.3	8	7.7	195.0	12.5	318.0	3.1	78	291.0	132.0
8"	200	8.0	202	13.6	345	18.0	457	7.9	200.0	0.9	22.9	11.8	298.5	8	9.3	237.0	15.3	389.5	4.7	120	429.9	195.0
10"	250	10.0	254	15.9	405	21.0	533	8.9	226.0	1.0	25.4	14.3	362.0	12	11.1	282.0	17.2	437.0	4.7	120	687.8	312.0
12"	300	12.0	305	19.1	485	24.0	610	12.0	304.0	1.0	25.4	17.0	431.8	12	11.7	296.0	19.4	493.0	4.9	125	762.8	346.0

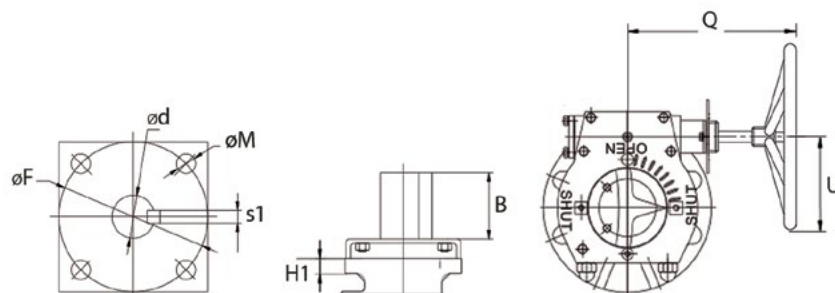
ANSI CLASS 300																						
Size		D		O		L		J		W		X		V	H		K		I		Weight	
in	mm	in	mm	in	mm	in	mm	in	mm	in	mm	in	mm	Holes	in	mm	in	mm	in	mm	lb	kg
6"	150	5.9	151	12.6	320	15.9	403	6.9	175	0.9	22.2	10.6	269.9	12	7.7	195.0	12.5	318	3.1	78	319.7	145.0
8"	200	8.0	202	15.0	380	19.8	502	7.9	200	1.0	25.4	13.0	330.2	12	9.3	237.0	14.9	379	5.0	126	517.0	234.5
10"	250	10.0	254	17.5	445	22.4	568	10.3	261	1.1	28.6	15.3	387.4	16	11.1	282.0	17.4	441	5.0	126	1,086.9	493.0
12"	300	12.0	305	19.1	485	24.0	610	12.0	304	1.0	25.4	17.0	431.8	12	11.7	296.0	19.4	493	4.9	125	762.8	346.0



**2-PIECE FLOATING BALL VALVE**  
**SOFT SEATED - REDUCED BORE**  
**CLASS 150 & 300**  
SIZE 8" to 10"  
Enclosed Gear Operated

ANSI CLASS 150																								
Size		D		DN		O		L		J		W		X		V	H		K		I		Weight	
in	mm	in	mm	in	mm	in	mm	in	mm	in	mm	in	mm	in	mm	Holes	in	mm	in	mm	in	mm	lb	kg
8"	200	5.9	151	8.0	202	13.6	345	18.0	457	7.9	200	0.9	22.2	11.8	298.5	8	7.7	195	12.5	318.0	3.1	78	321.9	146
10"	250	8.0	202	10.0	254	15.9	405	21.0	533	8.9	226	1.0	25.4	14.3	362.0	12	9.3	237	15.3	389.5	4.7	120	480.6	218

ANSI CLASS 300																								
Size		D		DN		O		L		J		W		X		V	H		K		I		Weight	
in	mm	in	mm	in	mm	in	mm	in	mm	in	mm	in	mm	in	mm	Holes	in	mm	in	mm	in	mm	lb	kg
8"	200	5.9	151	8.0	202	15.0	380	19.8	502	7.9	200	1.0	25.4	13.0	330.2	12	7.7	195	12.5	318	3.1	78	379.2	172
10"	250	8.0	202	10.0	254	17.5	445	22.4	568	10.3	261	1.1	28.6	15.3	387.4	16	9.3	237	14.9	379	5.0	126	705.5	320



## 2-PIECE FLOATING BALL VALVE SOFT SEATED - FULL BORE CLASS 150 & 300

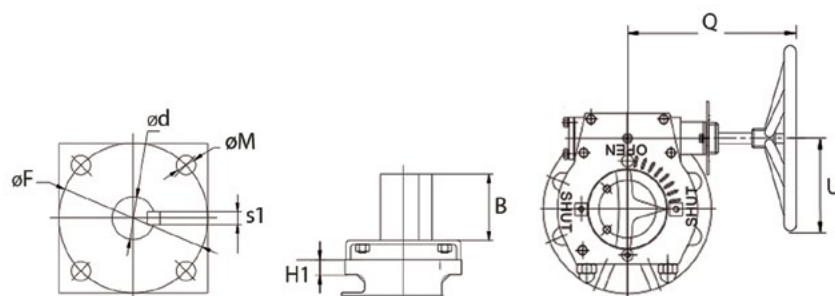
SIZE 6" to 12"  
 Enclosed Gear Operated

ANSI CLASS 150

Size		$\phi F$		$\phi d$		$\phi M$	S1		H1		B		Q		U	
in	mm	in	mm	in	mm		in	mm	in	mm	in	mm	in	mm	in	mm
6"	150	4.9	125	1.3	34	M12	0.4	10	0.6	16.0	2.0	50.0	8.8	223.5	11.8	300
8"	200	5.5	140	1.8	45	M16	0.5	12	0.6	16.0	2.5	64.0	10.5	267.0	15.7	400
10"	250	5.5	140	2.2	55	M16	0.7	18	0.9	22.0	2.5	63.0	12.4	316.0	23.6	600
12"	300	10.0	254	3.1	78	M16	0.9	22	1.0	25.0	3.8	97.5	20.2	513.0	23.6	600

ANSI CLASS 300

Size		$\phi F$		$\phi d$		$\phi M$	S1		H1		B		Q		U	
in	mm	in	mm	in	mm		in	mm	in	mm	in	mm	in	mm	in	mm
6"	150	4.9	125	1.5	38	M12	0.4	10	0.6	16.0	2.0	50.0	8.8	223.5	11.8	300
8"	200	5.5	140	1.8	45	M16	0.5	12	0.6	16.0	2.5	64.0	15.9	404.0	27.6	700
10"	250	5.5	140	2.2	55	M16	0.7	18	0.9	22.0	2.5	63.0	15.8	402.0	23.6	600
12"	300	10.0	254	3.1	78	M16	0.9	22	1.0	25.0	3.8	97.5	20.2	513.0	23.6	600



## 2-PIECE FLOATING BALL VALVE SOFT SEATED - REDUCED BORE CLASS 150 & 300

SIZE 8" to 10"  
 Enclosed Gear Operated

ANSI CLASS 150

Size		$\phi F$		$\phi d$		$\phi M$	S1		H1		B		Q		U	
in	mm	in	mm	in	mm		in	mm	in	mm	in	mm	in	mm	in	mm
8"	200	4.9	125	1.3	34	M12	0.4	10	0.6	16	2.0	50	8.8	223.5	11.8	300
10"	250	5.5	140	1.8	45	M16	0.5	12	0.6	16	2.5	64	10.5	267.0	15.7	400

ANSI CLASS 300

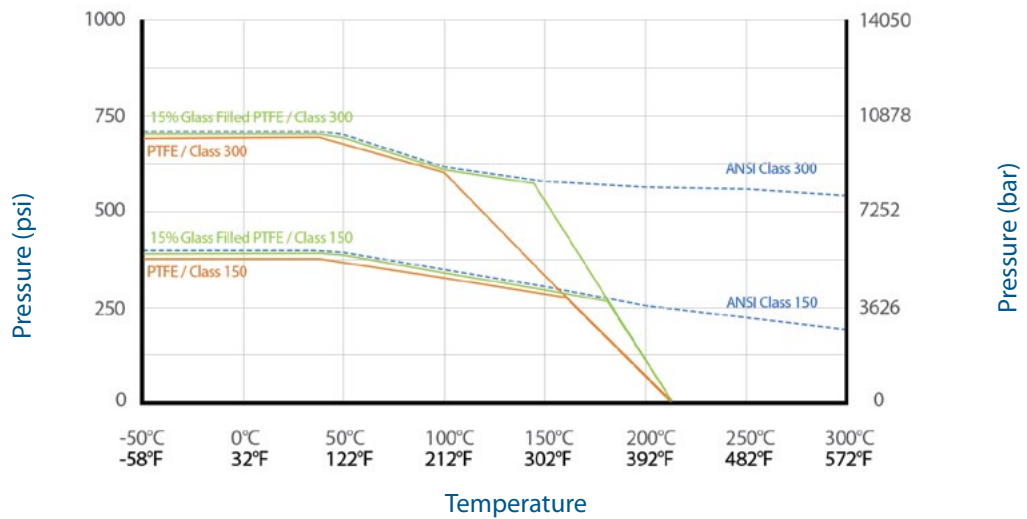
Size		$\phi F$		$\phi d$		$\phi M$	S1		H1		B		Q		U	
in	mm	in	mm	in	mm		in	mm	in	mm	in	mm	in	mm	in	mm
8"	200	4.9	125	1.5	38	M12	0.4	10	0.6	16	2.0	50	8.8	223.5	11.8	300
10"	250	5.5	140	1.8	45	M16	0.5	12	0.6	16	2.5	64	15.9	404.0	27.6	700

### NOTES:

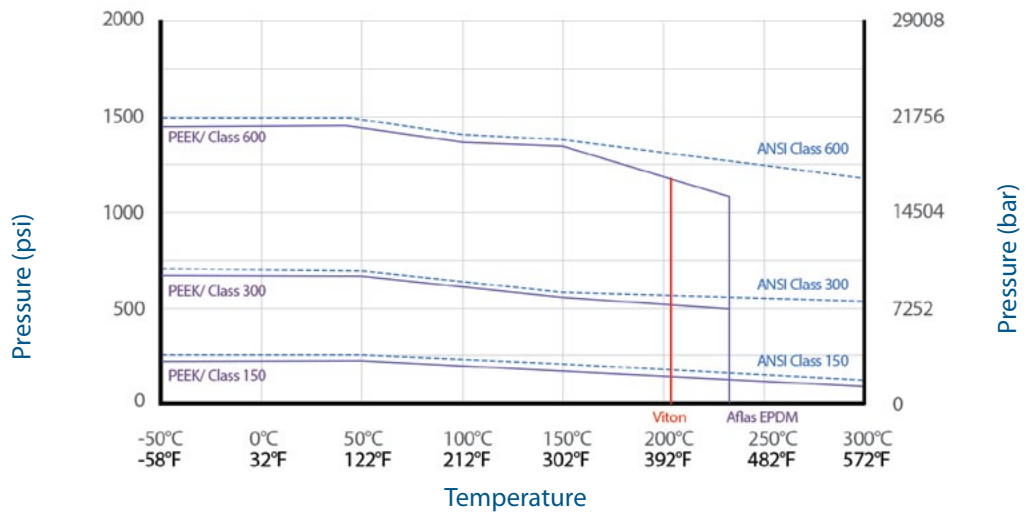
- The information on this catalog is provided for general informational purposes only.
- Customization for specific applications is available upon request.
- For all technical parameters of the product please contact your local FluoroSeal sales office or authorized representative.
- We reserve the right to make changes without prior notice.

PRESSURE-TEMPERATURE CHART

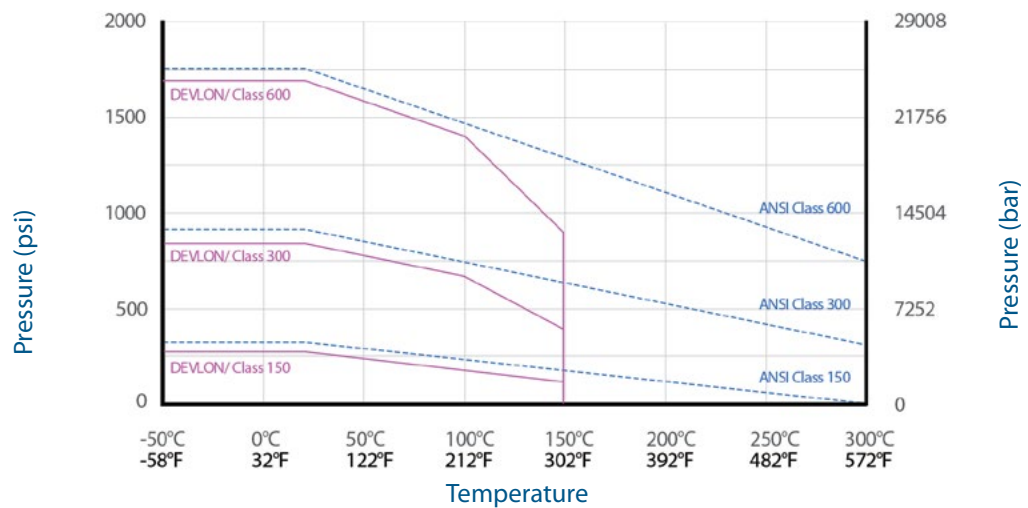
PTFE & RPTFE SEATED



PEEK SEATED



DEVILON SEATED



## VALVE OPERATING TORQUES - FULL PORT

Size		PTFE SEATS					
		Class 150		Class 300		Class 600	
in	DN	in-lbs	Nm	in-lbs	Nm	in-lbs	Nm
½"	15	8	0.90	12	1.35	-	-
¾"	20	12	1.35	16	1.80	-	-
1"	25	15	1.69	20	2.25	-	-
1 ½"	40	30	3.38	40	4.51	-	-
2"	50	50	5.64	72	8.13	138	15.59
3"	80	91	10.28	180	20.33	293	33.10
4"	100	230	25.98	345	38.97	690	77.95
6"	150	420	47.45	735	83.04	-	-
8"	200	1,100	124.28	3,050	344.60	-	-
10"	250	2,600	293.76	3,650	412.39	-	-
12"	300	4,000	451.93	-	-	-	-

## VALVE OPERATING TORQUES - REDUCED PORT

Size		PTFE SEATS					
		Class 150		Class 300		Class 600	
in	DN	in-lbs	Nm	in-lbs	Nm	in-lbs	Nm
½"	15	3	0.33	7	0.79	-	-
¾"	20	8	0.90	12	1.35	-	-
1"	25	12	1.35	16	1.80	-	-
1 ½"	40	15	1.69	20	2.25	-	-
2"	50	30	3.38	40	4.51	112	12.65
3"	80	50	5.64	72	8.13	138	15.59
4"	100	91	10.28	180	20.33	293	33.10
6"	150	230	25.98	345	38.97	-	-
8"	200	420	47.45	735	83.04	-	-
10"	250	1,100	124.28	3,050	344.60	-	-

## FLOW COEFFICIENT - REDUCED PORT

UNIBODY											
Size		Ball Bore	Cv max	Cv for Various Openings							
in	DN	D	90°	80°	70°	60°	50°	40°	30°	20°	10°
½"	15	11	7.8	5.1	3.3	2.2	1.4	0.8	0.5	0.2	0.05
¾"	20	14	14.9	9.7	6.3	4.1	2.6	1.6	0.9	0.4	0.1
1"	25	19	28.3	18.5	12.1	7.8	4.9	3.0	1.7	0.8	0.2
1 ½"	40	30	73.2	47.8	31.2	20.1	12.6	7.7	4.3	2.1	0.6
2"	50	38	119.9	78.3	51.1	32.9	20.7	12.5	7.1	3.4	0.9
3"	80	62	332.7	217.2	141.9	91.4	57.5	34.8	19.6	9.4	2.6
4"	100	76	507.1	331.1	216.3	139.3	87.7	53.1	29.9	14.4	3.9
6"	150	100	895.3	584.6	381.8	245.9	154.8	93.7	52.8	25.4	7.0
8"	200	144	1,908.4	1,246.0	813.8	524.1	330.0	199.8	112.5	54.0	14.8

2-PIECE BODY											
Size		Ball Bore	Cv max	Cv for Various Openings							
in	DN	D	90°	80°	70°	60°	50°	40°	30°	20°	10°
¾"	20	14	14.9	9.7	6.3	4.1	2.6	1.6	0.9	0.4	0.1
1"	25	19	28.3	18.5	12.1	7.8	4.9	3.0	1.7	0.8	0.2
1 ½"	40	30	73.2	47.8	31.2	20.1	12.6	7.7	4.3	2.1	0.6
2"	50	38	119.9	78.3	51.1	32.9	20.7	12.5	7.1	3.4	0.9
3"	80	62	332.7	217.2	141.9	91.4	57.5	34.8	19.6	9.4	2.6
4"	100	76	507.1	331.1	216.3	139.3	87.7	53.1	29.9	14.4	3.9
6"	150	100	895.3	584.6	381.8	245.9	154.8	93.7	52.8	25.4	7.0
8"	200	144	1,908.4	1,246.0	813.8	524.1	330.0	199.8	112.5	54.0	14.8
10"	250	187	3,276.9	2,139.5	1,397.4	900.0	566.6	343.0	193.2	92.8	25.5

## FLOW COEFFICIENT - FULL PORT

2-PIECE BODY											
Size		Ball Bore	Cv max	Cv for Various Openings							
in	DN	D	90°	80°	70°	60°	50°	40°	30°	20°	10°
½"	15	14	16.0	8.7	4.5	2.1	0.8	0.2	0.0	0.0	0.0
¾"	20	19	32.5	20.2	11.9	6.6	3.4	1.5	0.4	0.0	0.0
1"	25	24	55.8	33.6	15.4	10.2	4.9	1.9	0.3	0.1	0.1
1 ½"	40	38	160.4	103.8	63.8	37.3	20.4	9.9	3.7	0.5	0.1
2"	50	50	300.8	193.4	118.2	68.6	37.1	17.7	6.4	0.7	0.3
3"	80	76	782.6	516.8	325.0	194.6	109.6	56.0	23.3	5.0	0.7
4"	100	100	1,465.3	987.7	634.7	389.4	226.0	120.6	54.8	16.1	1.3
6"	150	151	3,720.3	2,531.8	1,643.6	1,019.5	599.6	326.2	153.5	50.1	3.3
8"	200	202	7,223.5	4,959.5	3,249.6	2,036.2	1,540.6	670.8	325.2	115.2	10.5
10"	250	254	12,172.7	8,409.0	5,545.6	3,499.3	2,100.7	1,175.7	581.5	216.5	26.2
12"	300	305	18,462.4	12,849.6	8,540.9	5,435.3	3,295.5	1,869.5	946.0	371.9	59.5



## BG1 - FLOATING BALL VALVES

Item	Description	Stainless Steel	WCB
1	Body	ASTM A351 CF8M	ASTM A216 WCB
2	End Cap	ASTM A182 F316	ASTM A105
3	Ball	ASTM A182 F316	ASTM A182 F316
4	Stem	ASTM A182 F316	ASTM A182 F316
5	Seat	TFM1700 / 1600	TFM1700 / 1600
6	Locking Plate	ASTM A515 70	ASTM A515 70
7	Nut Lock	ASTM A240 304	ASTM A240 304
8	Body Gasket	PTFE	PTFE
9	Stem Packing	Chevron	Chevron
10	O-ring	Viton	Viton
11	O-ring	Viton	Viton
12	Stem Packing	Chevron	Chevron
13	Thrust Washer	Filled PTFE	Filled PTFE
14	Gland	ASTM A276 316	ASTM A276 316
15	Belleville Spring	ASTM A240 304	ASTM A240 304
16	Antistatic Spring	ASTM A313 316	ASTM A313 316
17	Antistatic Spring	ASTM A313 316	ASTM A313 316
18	Antistatic Ball	ASTM A276 304	ASTM A276 304
19	Position Plate *	ASTM A515 70	ASTM A515 70
20	Packing Gland Screw	ASTM A193 B7	ASTM A193 B7
21	Wrench	ASTM A29 1035	ASTM A29 1035
22	Lever Nut	304 Stainless Steel	304 Stainless Steel

## BG2 - FLOATING BALL VALVES

Item	Description	Stainless Steel	WCB
1	Body	ASTM A351 CF8M	ASTM A216 WCB
2	End Cap	ASTM A351 CF8M	ASTM A216 WCB
3	Ball	ASTM A182 F316	ASTM A182 F316
4	Stem	ASTM A182 F316	ASTM A182 F316
5	Seat	TFM1700 / 1600	TFM1700 / 1600
6	Locking Plate	ASTM A515 70	ASTM A515 70
7	Screw	ASTM A193 B8	ASTM A193 B7
8	Packing Nut	ASTM A194 8	ASTM A194 8
9	Body Gasket	PTFE	PTFE
10	O-ring	Viton	Viton
11	Stem Packing	PTFE	PTFE
12	Thrust Washer	PTFE	PTFE
13	Gland	ASTM A276 316	ASTM A276 316
14	Belleville Spring	ASTM A240 304	ASTM A240 304
15	Antistatic Spring	ASTM A313 316	ASTM A313 316
16	Antistatic Spring	ASTM A313 316	ASTM A313 316
17	Antistatic Ball	ASTM A276 304	ASTM A276 304
18	Position Plate *	ASTM A515 70	ASTM A515 70
19	Travel Stop Screw	304 Stainless Steel	304 Stainless Steel
20	Wrench Nut	304 Stainless Steel	304 Stainless Steel
21	Wrench	ASTM A29 1035	ASTM A29 1035
22	Body Nut	ASTM A194 8	ASTM A194 2H

\* Item only available for valve sizes ½" to 1 ½"

# ORDERING INSTRUCTIONS



Size	Valve Type	Bore Type	Pressure Class	Flow Pattern	End Connection	Operator	Body / Ball-Stem	Seat / Seal	Bolting	Firesafe (optional)
1/2" to 12"	BG1 Unibody Floating Ball Valve BG2 2-piece Floating Ball Valve	F Full Bore R Reduced Bore	15 = ASME Class 150 30 = ASME Class 300 60 = ASME Class 600	2	FR Flange Raised Face FF Flat Faced Flanged	EG Enclosed Gear EL Gear + Locking Device A Actuator	1 WCB / 316 2 CF8M / 316 3 CF8 / 304 4 LCC / 316	PP PTFE / PTFE PV PTFE / Viton RP RPTFE / PTFE RV RPTFE / Viton	1 B7 / 2H 2 B7M / 2HM X Special	1 Firesafe

\*According to ASTM A193 and ASTM A194

## MODEL SELECTION EXAMPLE

Example: 4"BG2-F-152FR/W-1-PV-10

Description: FluoroSeal 4" 2-piece Floating Ball Valve, Full Bore, Class 150, Two-way Flow Pattern, Flanged Raised Face, Wrench Operated, Body in ASTM A216 Gr. WCB, Ball-Stem in 316 Stainless Steel, PTFE Seat, Viton Seal, ASTM A193 B7 bolts, ASTM A194 2H studs and nuts, and No Firesafe.

## NOTES:

1. For all technical parameters of the product please refer to this catalog, additional information can be obtained from your local FluoroSeal sales office or authorized representative.
2. Customization for specific applications is available upon request.

## CONTROLLING PROVISIONS

These terms and conditions shall control with respect to any purchase order or sale of FluoroSeal Inc.'s products. No waiver, alteration or modification of these terms and conditions whether on Buyer's purchase order or otherwise, shall be valid unless the waiver, alteration or modification is specifically accepted in writing and signed by an authorized representative of FluoroSeal Inc.

## DELIVERY

FluoroSeal Inc. will make every effort to complete delivery of products as indicated on its acceptance of an order, but FluoroSeal Inc. assumes no responsibility or liability, and will accept no back charge, for loss or damage due to delay or inability to deliver caused by acts of God, war, labor difficulties, accident, delays of carriers, by contractors or suppliers, inability to obtain materials, shortages of fuel and energy, or any other causes of any kind whatever beyond the control of FluoroSeal Inc. FluoroSeal Inc. may terminate any contract of sale of its products without liability of any nature, by written notice to Buyer, in the event that the delay in delivery or performance resulting from any of the aforesaid causes shall continue for a period of sixty (60) days. Under no circumstances shall FluoroSeal Inc. be liable for any special or consequential damages or for loss, damage, or expense (whether or not based on negligence) directly or indirectly arising from delays or failure to give notice of delay.

## WARRANTY

FluoroSeal Inc. warrants for one year from the date of shipment its manufactured products to the extent that FluoroSeal Inc. will replace those having defects in material or workmanship when used for the purpose and in the manner which FluoroSeal Inc. recommends. If FluoroSeal Inc.'s examination discloses to its satisfaction that the products are defective and an adjustment is required, the amount of such adjustment shall not exceed the net sale price of the defective product(s) - no allowance will be made for labor or expense for 3rd party repair or replacement of defective products or damage resulting from same. FluoroSeal Inc. warrants other manufacturers products which it sells to the extent of the warranties and terms & conditions of their respective makers. Where engineering design or fabrication work is supplied, Buyer's acceptance of FluoroSeal Inc.'s design or of delivery of work shall relieve FluoroSeal Inc. of all further obligation, other than expressed in FluoroSeal Inc.'s product warranty.

THIS IS FLUOROSEAL INC.'S SOLE WARRANTY. FLUOROSEAL INC. MAKES NO OTHER WARRANTY OF ANY KIND, EXPRESSED OR IMPLIED, AND ALL IMPLIED WARRANTIES OF MERCHANTABILITY AND FITNESS FOR A PARTICULAR PURPOSE WHICH EXCEED THE AFORE STATED OBLIGATION ARE HEREBY DISCLAIMED BY FLUOROSEAL INC. AND EXCLUDED FROM THIS WARRANTY.

FluoroSeal Inc. neither assumes, nor authorizes any person to assume for it, any other obligation in connection with the sale of its engineering designs or products. This warranty shall not apply to any products or parts of products which (a) have been repaired or altered outside of FluoroSeal Inc.'s factory, in any manner; (b) have been subjected to misuse, negligence or accidents; (c) have been used in a manner contrary to FluoroSeal Inc.'s instructions or recommendations. FluoroSeal Inc. shall not be responsible for design errors due to inaccurate or incomplete information supplied by Buyer or its representatives.

## LIABILITY

FluoroSeal Inc. will not be liable for any loss, damage, cost of repairs, incidental or consequential damages of any kind, whether based upon warranty (except for the obligation accepted by FluoroSeal Inc. under "Warranty" above), contract or negligence, arising in connection with the design, manufacture, sale, use or repair of the products or of the engineering designs supplied to Buyer. Any litigation will be interpreted in accordance with the laws of the Province of Québec, Canada and any suit, action or

proceeding relating to these terms and conditions may be instituted in any competent court sitting in the district of Montréal, Québec, Canada.

## RETURNS

FluoroSeal Inc. cannot accept return of any product(s) unless its written permission has been first obtained, in which case same will be credited subject to the following: (a) all material returned must, on its arrival at FluoroSeal Inc.'s plant, be found to be in first-class condition; if not, cost of putting in saleable condition will be deducted from credit memoranda; (b) a handling charge deduction will be made from all credit memoranda issued for material returned; (c) transportation charges, if not prepaid, will be deducted from credit memoranda.

## SHIPMENTS

All products sent out will be carefully examined, counted and packed. The cost of any special packing or special handling caused by Buyer's requirements or requests shall be added to the amount of the order. No claim for shortages will be allowed unless made in writing within ten (10) days of receipt of a shipment. Claims for products damaged or lost in transit should be made to the carrier, as FluoroSeal Inc.'s responsibility ceases, and title passes, on delivery to the carrier.

## SPECIAL PRODUCTS

Orders covering special or non-standard products are not subject to cancellation except on such terms as FluoroSeal Inc. may specify on application.

## PRICES AND DESIGNS

Prices and designs are subject to change without notice. All prices are F.O.B. Point of Shipment, unless otherwise stated.

## TAXES

The amount of any sales, excise or other taxes, if any, applicable to the products, shall be added to the purchase price and shall be paid by Buyer unless Buyer provides FluoroSeal Inc. with an exemption certificate acceptable to the taxing authorities.

## NUCLEAR PLANTS

Where the products, engineering design or fabrication is for nuclear plant applications, Buyer agrees (a) to take all necessary steps to add FluoroSeal Inc. as an insured supplier under the American Nuclear Insurers (ANI) pool and under the Mutual Atomic Energy Reinsurance Pool (MAERP) for property damage and liability insurance and if necessary steps could have been taken, but are not taken, Buyer shall hold FluoroSeal Inc. harmless against all such losses which could have been thus covered; (b) Buyer agrees to hold FluoroSeal Inc. harmless with respect to any personal injury or death, property damage or any other loss in a nuclear incident which is caused directly or indirectly by defective design, material, or workmanship, furnished by FluoroSeal Inc. and which is covered by insurance maintained by Buyer (or which could be so covered but with respect to which Buyer has elected to self-insure), and further agrees to waive subrogation by its carriers of such insurance against FluoroSeal Inc.; (c) as to nuclear hazards for which Buyer cannot obtain insurance coverage, the liability of FluoroSeal Inc. for any personal injury or death, property damage or any other loss directly caused by defective design, material, or workmanship furnished by FluoroSeal Inc. shall not exceed the value of the material furnished by FluoroSeal Inc. at the time of the loss occurrence.



Specifications, features, and technical data shown in this catalog are based upon the latest information available at the time of publication. FluoroSeal Inc. reserves the right to make changes at any time, without notice to specifications, accessories, materials, models, and colors. | © 2022 FluoroSeal Inc.

FluoroSeal Inc. is a FluoroSeal Group Company

[www.fluorosealvalves.com](http://www.fluorosealvalves.com)